

Standard Preparation 1200 mm Meat & Fish Processing/Washing Table

ITEM # _____

MODEL # _____

NAME # _____

SIS # _____

AIA # _____

**132960
(TLC1210PN)**

Meat and fish processing/washing table with perforated and removable plates, knife holder, polythene cutting board, drain, scraping hole and upstand, 1200mm

Short Form Specification

Item No. _____

50mm high worktop in 304 AISI stainless steel, 1mm in thickness. Integral radiused rear upstand, h=100mm. All-round apron. Square section legs 40x40mm on 1" height-adjustable feet in 304 AISI stainless steel. Knife holder. N.1 polythene cutting board 730x225x25h mm on front and waste scraping hole.

Main Features

- Sturdiness, stability and reliability of table accurately tested.

Construction

- Table can be equipped with a mobile bin with lid for waste disposal (optional accessory).
- 50 mm worktop in 304 AISI stainless steel, 10/10 in thickness with upturned edges and reinforced waterproof underpanel, incorporates a layer of sound deadening materials.
- Square section legs and 40 mm height-adjustable feet in 304 AISI stainless steel.
- Unit features a 20 mm deep recessed surface, a polythene cutting board and a scraping hole on the front, perforated and sectionated removable tops, an easily removable GN liquid container and a knife holder. Knife sanitizer can be supplied as optional.

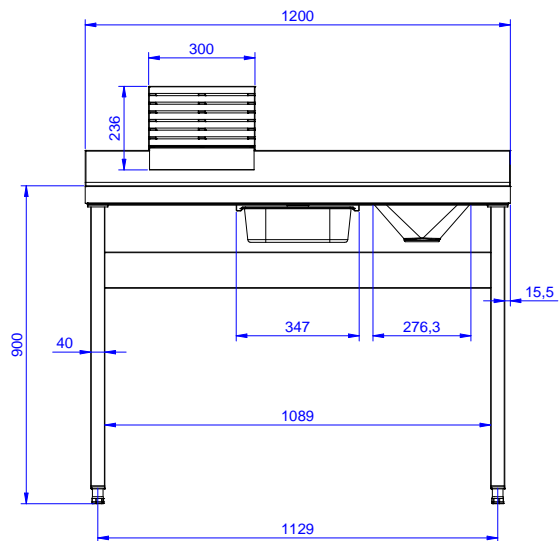
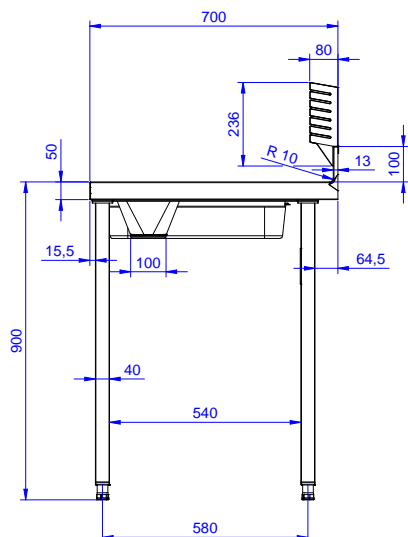
Optional Accessories

- Lower shelf for 1200mm tables and sinks and for 1800 mm undercounter dishwasher sinks PNC 855145 ☐
- Set of 4 wheels (2 with brake) d. 100mm for tables and sinks (total height on wheels= 993 mm) PNC 855150 ☐
- 3-sided underframe for 1200mm tables PNC 855152 ☐
- Single drawer GN 1/1, 400mm PNC 855280 ☐
- Single drawer, 600mm PNC 855281 ☐
- Additional drawer, 600mm (to set up a chest of 2, 3, 4 drawers) PNC 855295 ☐
- Additional drawer GN 1/1, 400mm (to set up a chest of 2, 3, 4 drawers) PNC 855298 ☐
- Elbow operated mixer tap with spout, 3/4" single hole PNC 855322 ☐
- Elbow operated mixer tap short spout, 3/4" single hole PNC 855323 ☐
- Foot operated Mixer tap with spout & with hot&cold pedals, 3/4" PNC 855328 ☐
- Elbow operated mixer tap with spout, 3/4" single hole PNC 855374 ☐
- Elbow operated mixer tap with short spout, 3/4" single hole PNC 855375 ☐
- Wall mounted mixing temperature pre-rinse unit PNC 855381 ☐
- Single hole deck mounted mixing temperature faucet with short spout PNC 855384 ☐
- Single hole deck mounted mixing temperature pre-rinse unit PNC 855385 ☐
- Single hole deck mounted elbow operated mixing temperature faucet with pre-rinse unit PNC 855386 ☐

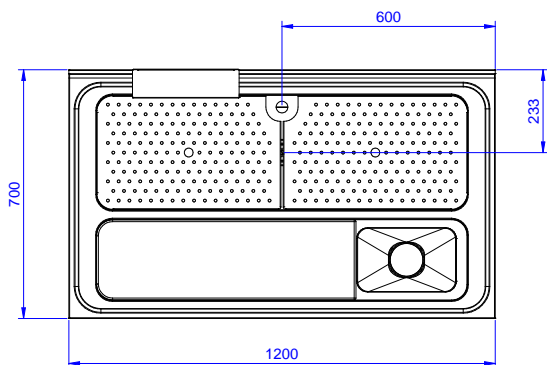
APPROVAL: _____

- Single hole deck mounted elbow operated mixing temperature faucet with short pre-rinse unit PNC 855388 ☐
- Floor fastening kit for 2 square legs PNC 865386 ☐

Standard Preparation 1200 mm Meat & Fish Processing/Washing Table

Front

Side


D = Drain

Top


Key Information:

External dimensions, Width:

132960 (TLC1210PN) 1200 mm

External dimensions, Depth:

700 mm

External dimensions, Height:

900 mm

Upstand Dimensions, Height:

100 mm

Upstand Dimensions, Depth:

13 mm

Upstand Dimensions, Radius:

R=10

Bowls number

1

Bowl dimensions

1070x320xH180

Worktop thickness:

50 mm

Net weight:

40 kg

Standard Preparation 1200 mm Meat & Fish Processing/Washing Table

The company reserves the right to make modifications to the products without prior notice. All information correct at time of printing.

2025.12.12